

## THE BENEFITS OF THE XPA 934



### MAXIMUM USER-FRIENDLINESS

Easy material handling and quick change of label and ribbon material.



### MAXIMUM INSTALLATION FLEXIBILITY

The flexible positioning of the label roll, the compactness of the machine and the possibility of mounting the XPA 934 in any conceivable position ensure maximum integration flexibility.

# 100%

### TOOL-FREE MAINTENANCE

100% tool-free maintenance and replacement of wear parts reduce downtime and increase productivity.



### REDUCTION OF ERRORS

Reduced manual handling due to automatic adjustments and transfer of settings after changing the print head or material.



### REDUCED DOWNTIME

The high robustness of the XPA 934 together with easy maintenance and quick material changes ensure maximum uptime.

## TRUST THE EXPERTS

NOVEXX Solutions hardware, consumables, software, and service for best results



### Seamless integration

The experts at NOVEXX Solutions will support you in the integration process and beyond. We are always at your side – from finding solutions and system integration to maintenance and repair.



### High-performance hardware solutions

In addition to printing and labeling solutions, our innovative marking solutions also include labelers, label printers and pallet labeling systems – developed and made in Germany.



### High-quality consumables

Our expertise also includes the production of label material: Blank labels for variable print data, labels with security features, individual designs and high-quality thermal transfer films.



### TRACE-it® data management software

TRACE-it, the fully integrated software solution for central data and process management, supports companies in various industries in optimizing labeling and marking processes.

The information contained in this document is believed to be reliable, but NOVEXX Solutions makes no representations as to the accuracy or correctness of the data. As with all other data, this information should be independently validated with regard to the specific end-user conditions in order to ensure that the recommended marking complies with the relevant requirements and regulations. © 2019 NOVEXX Solutions GmbH, all rights reserved. Any trademarks and/or trade names of third parties used in these materials are the property of their respective owners.

[www.novexx.com](http://www.novexx.com)

**NOVEXX**  
SOLUTIONS

SCAN QR CODES  
TO EXPERIENCE  
THE XPA 934 LIVE



## XPA 934

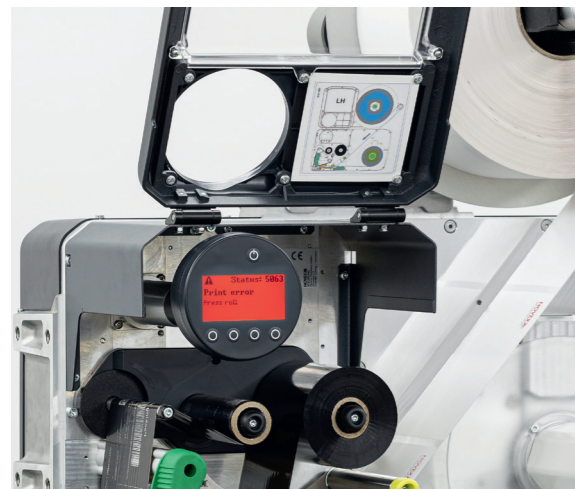
### THE NEW GENERATION OF PRINT & APPLY SYSTEMS

- Outstanding print quality and precise label application
- Easy material handling
- Tool-free maintenance
- Compact design with various mounting options

**NOVEXX**  
SOLUTIONS

# PRINT & APPLY LIKE NEVER BEFORE

Do you need a reliable Print & Apply System that can process dynamic data and apply labels quickly and precisely on any type of product? The XPA 934 offers excellent print results even at high application speeds and labels your products in real time. The most compact Print & Apply System on the market can be flexibly integrated into all production lines. It is capable of meeting any industrial labeling challenge and supply chain application.



## INTUITIVE DISPLAY

- Large, multi-colored display with high contrast
- Intuitive, icon-guided navigation with customer-specific "favorites" menu
- Readable with cover open and closed

## ROTATABLE DISPLAY

- Maximum user-friendliness
- Readable and operable from any position, even when installed upside down



## ROBUST AND DURABLE

- High-quality product components such as robust housing with sturdy metal frame
- Strong thread inserts for extra stability

- The design without fan prevents dust admission

## EXTRA COMPACT AND FLEXIBLE

- The XPA 934 is the most compact Print & Apply System on the market with a very small footprint
- Can be mounted in any conceivable position on the production line (top, side, bottom labeling)

- Various mounting possibilities of optional accessories e.g. label unwinder or applicators to perfectly suit your application
- Weighs less than 30 kg with increased durability at the same time

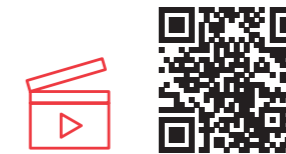
## EASY MAINTENANCE AND CLEANING

- 100% tool-free maintenance
- 100% tool-free replacement of wear parts e.g.: printhead or silicone rollers
- Open print module for easy cleaning



## FAST CHANGE OF MATERIAL

- Particularly quick and easy insertion of label and ribbon material
- Reduces downtime and increases OEE of production line



## AUTOMATIC SETTINGS

- Continuous adjustment of ribbon and label material tension for best print results
- Automatic setting of print head parameters such as pressure and contrast

## OUTSTANDING PRINT QUALITY

- Perfect printing results even at high application speeds via thermal transfer technology



QR codes take you to videos showing the XPA 934 in action and give you a closer look at some of its functions and special features. Scan the codes with your smartphone and convince yourself of the outstanding features of the XPA 934!

## PRINT & APPLY 4.0 – DIGITAL INTERFACES

The XPA 934 also meets digital requirements: a multitude of interfaces and real-time data that can be called up at any time support print & apply processes in Industry 4.0.

- Multi-stage, configurable I/O concept with M12 connectors for flexibly adaptable system interfaces

- Cross-media provision of information by connection via LAN interface, access to operating instructions via QR code and cable-free 1:1 connection with USB stick

- Option for remote operation via an optional 7" Panel PC including real-time data retrieval and error messages

